



THE LAKEHURST

4 BED | 3 BATH



ELEVATION B



ELEVATION A



ELEVATION C



ELEVATION D



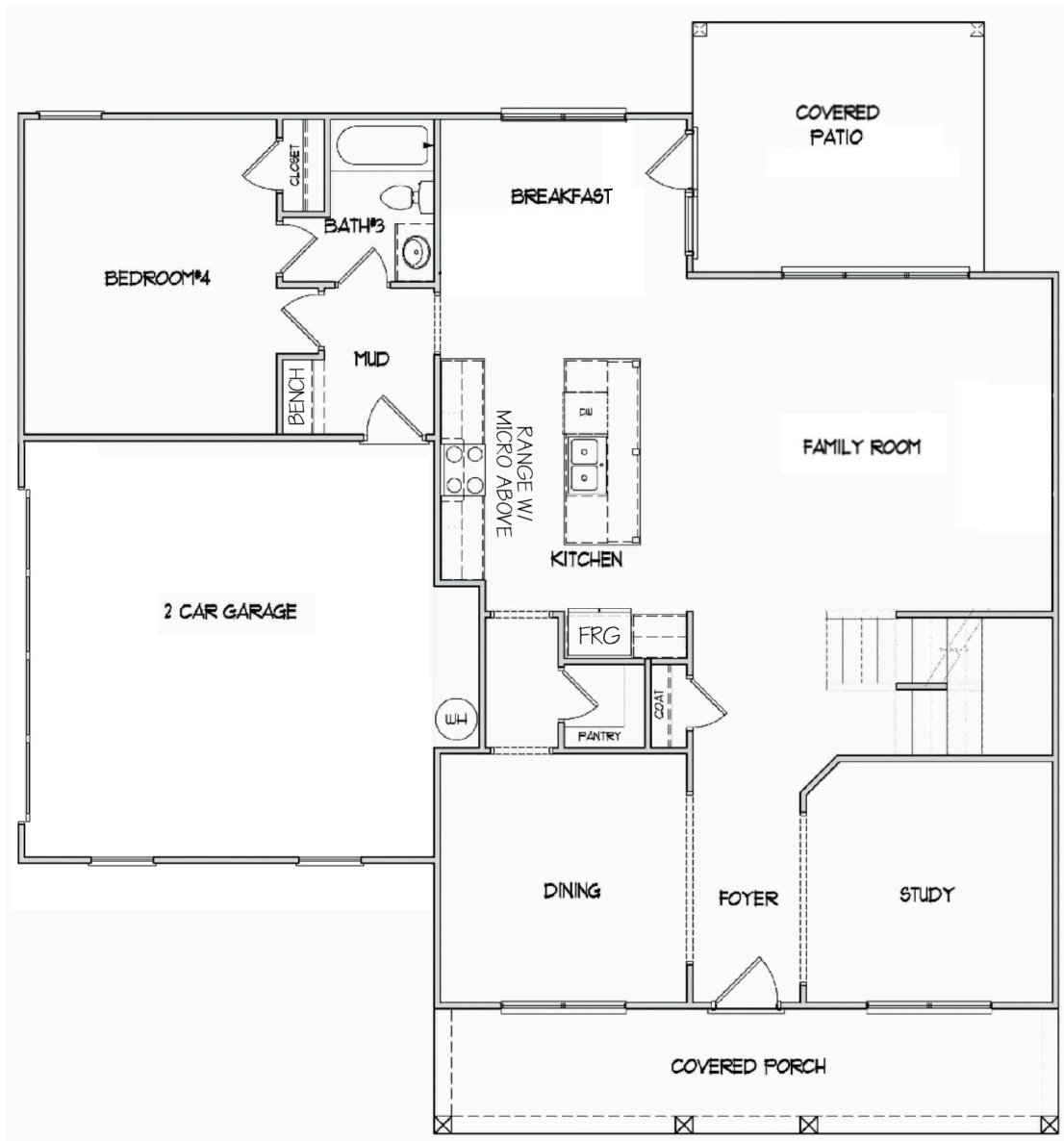
All home and community information (including but not limited to any and all pricing, availability, incentives, floor plans, site plans, features, utility information standards and options assessments, fees, planned amenities, special offerings, conceptual artists' renderings and community development plans, square footage and dimensions) is not guaranteed and remains subject to change, availability or delay without notice. Maps are not to scale. Actual siting of homes will be determined by the site and plot plan. All floorplans are property of the Builder. For any questions, please see a Sales Associate. Sales and Marketing by Tamra Wade Team. 6-15-22

RE/MAX 
— POWERED BY —
TAMRA WADE



THE LAKEHURST

4 BED | 3 BATH



MAIN FLOOR



All home and community information (including but not limited to any and all pricing, availability, incentives, floor plans, site plans, features, utility information standards and options assessments, fees, planned amenities, special offerings, conceptual artists' renderings and community development plans, square footage and dimensions) is not guaranteed and remains subject to change, availability or delay without notice. Maps are not to scale. Actual siting of homes will be determined by the site and plot plan. All floorplans are property of the Builder. For any questions, please see a Sales Associate. Sales and Marketing by Tamra Wade Team. 6-15-22

RE/MAX 
— POWERED BY —
TAMRA WADE



The floor plan for the second floor includes the following rooms and features:

- Master Bedroom:** Located at the top right, featuring a large dashed rectangular area indicating a fireplace or large rug.
- Master Bath:** Located at the top left, containing a toilet, a linen closet, and a shower.
- Master WIC:** A walk-in closet located between the Master Bath and the Master Bedroom.
- Bath #2:** Located in the center, containing a bathtub, a toilet, and two sinks.
- Hall:** A central hallway connecting the bedrooms, bathrooms, and laundry room.
- Laundry Room (LNDR):** Located in the center, containing two sinks.
- Bedroom #2:** Located at the bottom left.
- Bedroom #3:** Located at the bottom right.
- WIC:** A walk-in closet located between Bedroom #2 and Bedroom #3.
- LNEN:** A linen closet located between Bedroom #2 and Bedroom #3.
- Closet:** A closet located between the Master WIC and the Laundry Room.



EQUAL HOUSING
OPPORTUNITY

RE/MAX_{RU}
— POWERED BY —
TAMRA WADE