



THE SAXTON III

3 BED | 2 BATH



ELEVATION A



ELEVATION B



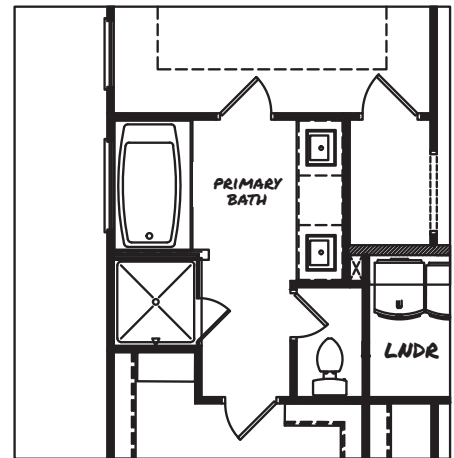
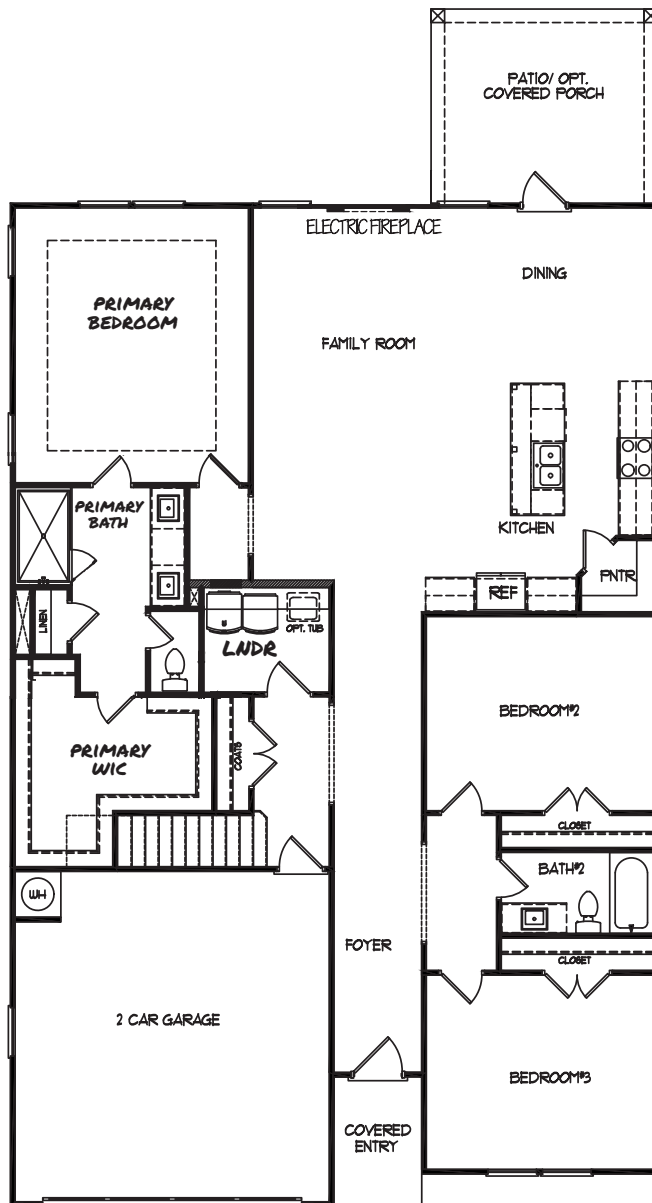
ELEVATION C



All home and community information (including but not limited to any and all pricing, availability, incentives, floor plans, site plans, features, utility information standards and options assessments, fees, planned amenities, special offerings, conceptual artists' renderings and community development plans, square footage and dimensions) is not guaranteed and remains subject to change, availability or delay without notice. Maps are not to scale. Actual siting of homes will be determined by the site and plot plan. All floorplans are property of the Builder. For any questions, please see a Sales Associate. 3-27-25

THE SAXTON III

3 BED | 2 BATH



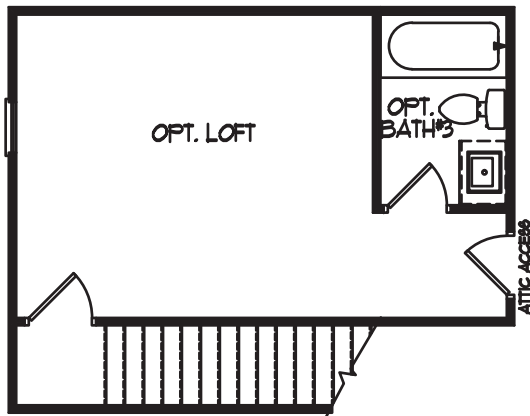
OPT. GARDEN TUB
WITH TILE SHOWER
IN PRIMARY BATH

MAIN FLOOR

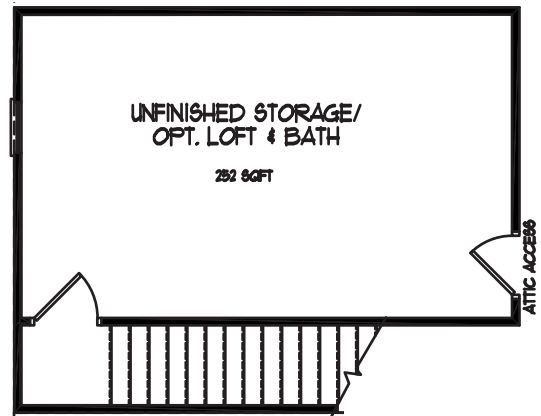


THE SAXTON III

3 BED | 2 BATH



OPT. LOFT WITH BATH



UNFINISHED
STORAGE

UPPER FLOOR



All home and community information (including but not limited to any and all pricing, availability, incentives, floor plans, site plans, features, utility information standards and options assessments, fees, planned amenities, special offerings, conceptual artists' renderings and community development plans, square footage and dimensions) is not guaranteed and remains subject to change, availability or delay without notice. Maps are not to scale. Actual siting of homes will be determined by the site and plot plan. All floorplans are property of the Builder. For any questions, please see a Sales Associate. 3-27-25